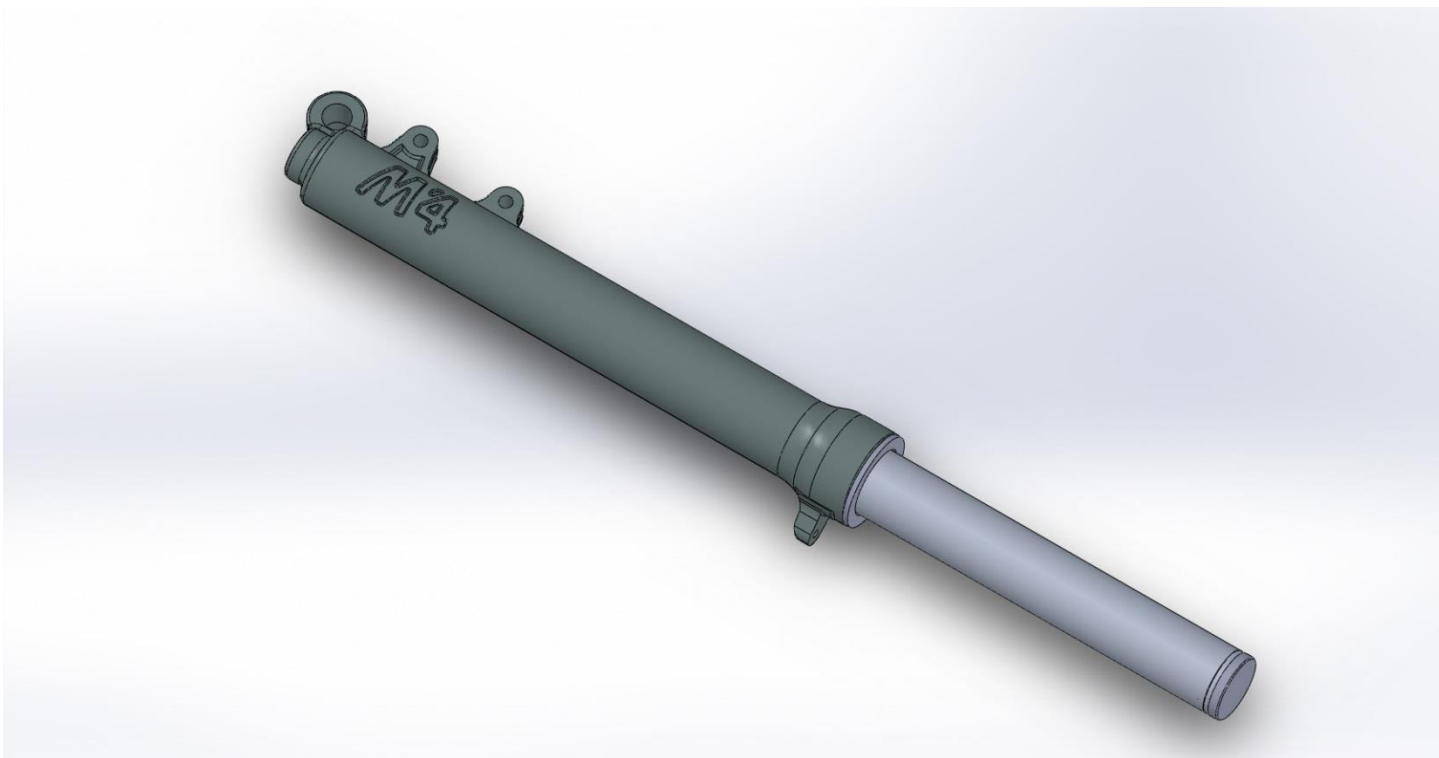


AIR 2024 MAINTENANCE MANUAL



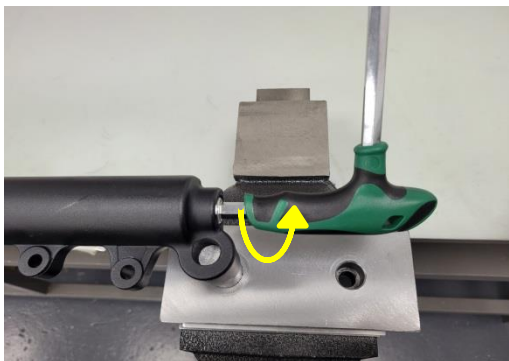
LEFT BOTTLE

DISASSEMBLY

STEP 1:

Loosen lower screw (402L0500C) (clockwise)

Tool: Allen key 10



A wheel axle can be used to fix the bottle on the workbench.



STEP 2:

Empty the oil from the bottle, the amount of oil in the bottle is 30ml.



STEP 3:

Loosen (counterclockwise) and remove the locking nut (402RL1000) from the lip seal (402A5239) and wiper seal (402A4839).

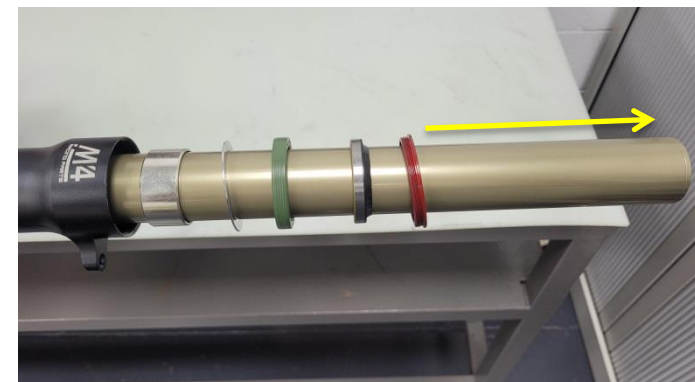


Tools:

(402T0005) Two-pin wrench.

STEP 4:

Separate the bar (402L0200C) from the cylinder by gently pulling outwards until the upper guide bushing (402A4339) is unlocked.



Note: To make disassembly easier, heat can be applied lightly with a hair dryer or similar to the upper guide bushing of the cylinder.

STEP 5:

- 1.- Replace lower guide bushing (402A4038)
- 2.- Replace upper guide bushing (402A4339)
- 3.- Replace M4 lip seal (402A5239)
- 4.- Replace wiper seal (402A4839)
- 5.- Overhaul washer retainer (402RL0900)
- 6.- Locking nut (402RL1000)



ASSEMBLY

STEP 6:

Insert bar into cylinder and nail the upper guide bushing (402A4339) until there is contact between tool and cylinder.

Tool: bushing nailing tool required



IMPORTANT: Replace the Ø19,5x2 O-ring housed in the lower screw (402R0500C) before inserting the bar into the cylinder.

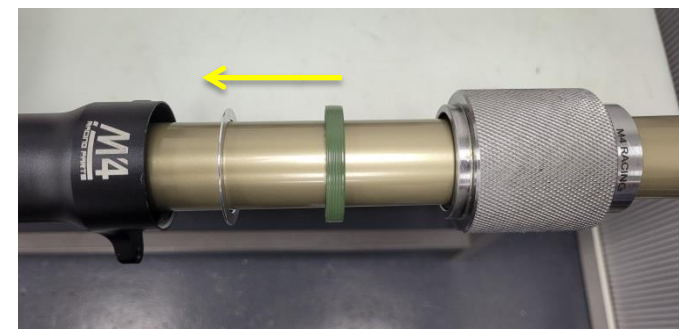


STEP 7:

Nail the the lip seal (402A5239) until there is contact between tool and cylinder.

Tool: Lip seal nailing tool.

Note: Grease seals before and after assembly.



IMPORTANT: Please note that the Ø19.5x2 threaded bolt is housed in the lower screw (402R0500C) and not inside the cylinder body.

STEP 8:

Mount the wiper seal (402A4839) and locking nut (402RL1000) and tighten (clockwise).



Note: Grease the wiper seal before and after assembly.

STEP 9:

Tighten (clockwise) the locking nut (402RL1000) of the lip seal (402A5239).

Tool: Two-pin wrench



STEP 10:

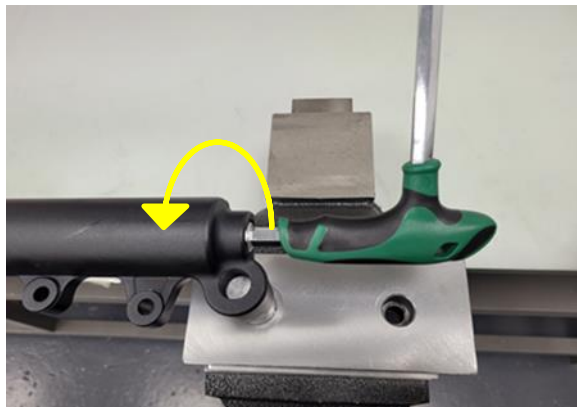
Fill the bottle with 30ml SAE 20 w suspension oil.



STEP 11:

Tighten lower screw (anti-clockwise)

Tools: Allen 10 Tightening torque 20Nm.



PRESSURE TABLE

UNDER 55Kg.	55 – 65 Kg	65 – 75 Kg.	75 – 85 Kg.	85 – 100 Kg.	+ 100
6 Bar	6 – 6.50 Bar	6.50 – 7 Bar	7 – 8 Bar	8 – 9 Bar	9 – 10 Bar
85 psi	87 – 95 psi	95 – 102 psi	102 – 116 psi	116 – 130 psi	130 – 145 psi

IMPORTANT

Use only original spare parts, they must be assembled using assembly grease.

Exemption from liability:

M4 Racing Parts shall not be liable for any damage or injury to you or any third party resulting from riding, transport or other use of the shock absorber. In the event of fork failure or malfunction, M4 Racing Parts shall be exempt from any liability or obligation, other than repair or replacement of the fork, under the conditions set forth in the warranty provisions contained in this manual.

Express exclusions from the warranty:

- Parts replaced due to normal wear and tear or routine maintenance.
- Parts subject to normal wear and tear or routine maintenance.
- Suspension fluids.

General warranty exclusions:

- Installation of non-original M4 Racing Parts parts and/or accessories.
- Abnormal deformation, neglect, misuse or abuse.
- Accident or collision damage.
- Modification of original parts.
- Lack of proper maintenance.
- Loss or damage in transit.
- Damage to the exterior or interior caused by rocks, collisions or improper installation.

-Oil changes or maintenance work not carried out by M4 Racing Parts or Authorised Service.

Warranty policy:

The factory warranty period of the fork is one year (two years in EU countries) from the date of original purchase of the fork. To be eligible for warranty, each shock absorber must be accompanied by a copy of the original proof of purchase. The validity of the warranty will be at the sole discretion of M4 Racing Parts and will cover only defects in materials or workmanship. The duration of the warranty and the laws governing it may vary from country to country.

Fork seals are covered by a 90 day warranty from the date of purchase. After this period, they will be considered items subject to wear and tear from normal use and will no longer be covered by warranty.

Parts, components and assemblies subject to wear and tear and deterioration from normal use are not covered by this warranty.

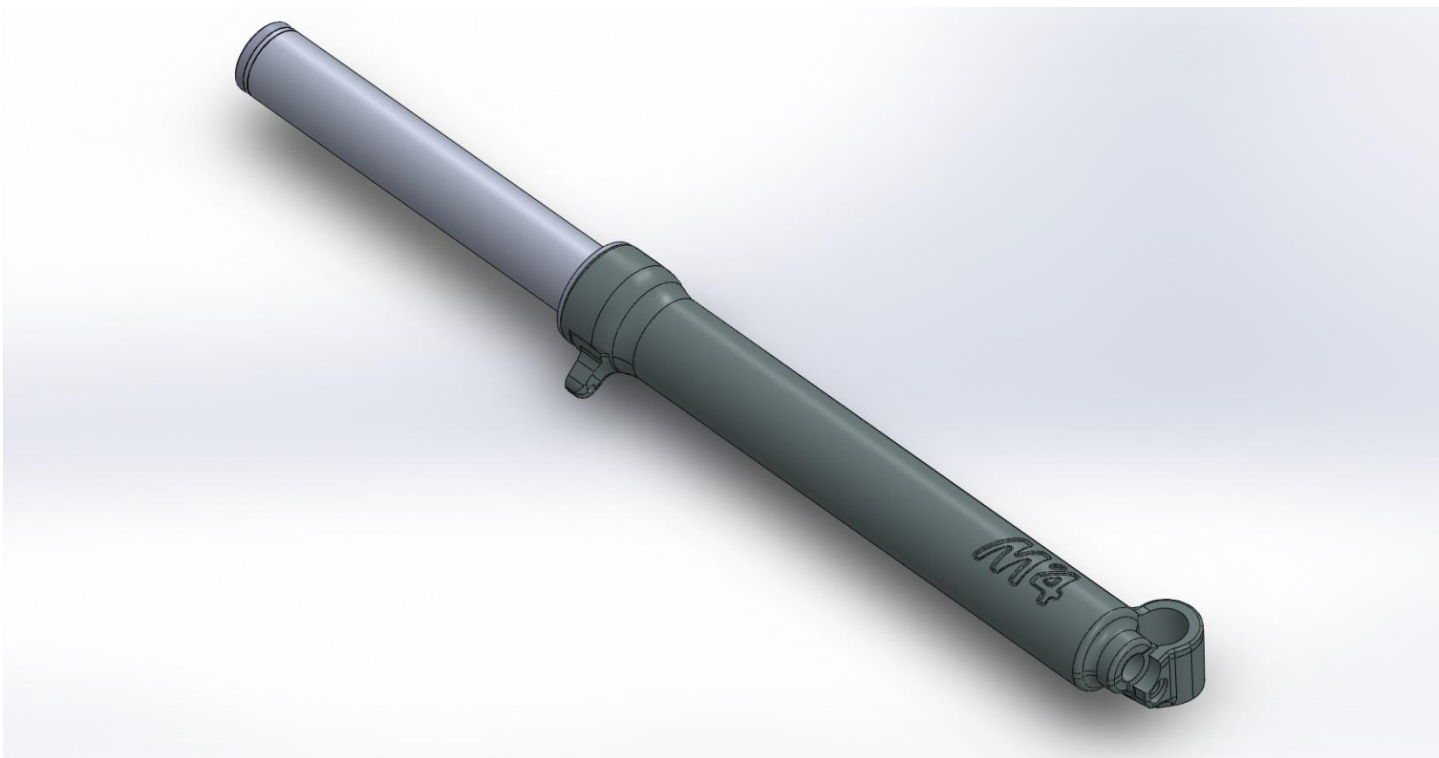
M4 Racing Parts reserves the right to make all final warranty or non-warranty decisions.

Warranty claim process:

M4 Racing Parts offers a standard response time of 48 hours, although this may vary.

Please attach a note describing the problem and the sender's address with a telephone number and e-mail address where you can be reached.

Shipping costs will be borne by the sender, both on dispatch and on return to the origin.



RIGHT BOTTLE

DISASSEMBLY

STEP 1:

Loosen the lower screw (402R0500C) by turning clockwise.

Tool: Allen key 10



A wheel axle can be used to fix the bottle on the workbench.



STEP 2:

Empty the oil from the bottle. The amount of oil in the right bottle is 30ml.



STEP 3:

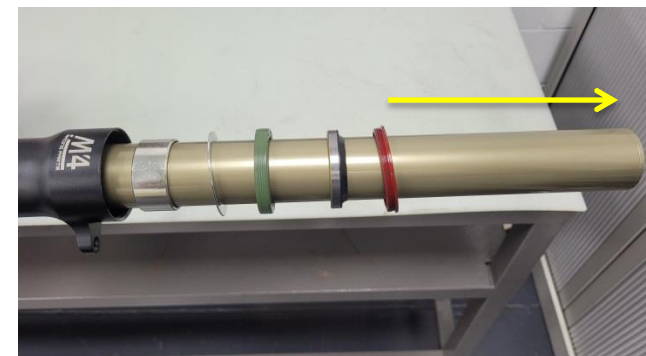
Loosen (counterclockwise) the locking nut (402RL1000) of the lip seal (402A5239).



Tools: Two-pin wrench.

STEP 4:

Separate the bar (402L0200C) from the cylinder by gently pulling outwards until the upper guide bushing (402A4339) is unlocked.



Note: To make the disassembly easier, heat can be applied lightly with a hairdryer or similar to the cylinder cap.

STEP 5:

- 1.- Replace lower guide bushing (402A4038)
- 2.- Replace upper guide bushing (402A4339)
- 3.- Replace M4 lip seal (402A5239)
- 4.- Replace wiper seal (402A4839)
- 5.- Overhaul washer retainer (402RL0900)
- 6.- Locking nut (402RL1000)



STEP 6:

Loosen the bar plug (402R0700C) (anti-clockwise) and replace the inner oil cartridge with 275ml. SAE 5w for suspensions.

Tool: Two-pin wrench.



Note: Replace plug o-ring (Ø30x3)

ASSEMBLY

STEP 7:

Once the oil has been replaced, reassemble the compression set with the bar plug (clockwise).



Note: Remove air from the cartridge after the 275ml (140mm chamber) of oil has been introduced by compressing the stem in linear compression/extension movements until the oil has been distributed throughout the bar.

STEP 8:

Insert bar into cylinder and nail the upper guide bushing (402A4339) until there is contact between tool and cylinder.

Tool: bushing nailing tool required



IMPORTANT: Replace the Ø19,5x2 O-ring housed in the lower screw (402R0500C) before inserting the bar into the cylinder.



STEP 9:

Nail the lip seal (402A5239) until there is contact between the tool and the cylinder.

Tool: Lip seal nailing tool.



IMPORTANT: Please note that the Ø19.5x2 threaded bolt is housed in the lower bolt (402R0500C) and not inside the cylinder body.

STEP 10:

Mount wiper seal (402A4839) and locking nut (402RL1000) and tighten (clockwise).

Tool: Two-pin wrench.



Note: Grease the wiper seal before and after assembly.

STEP 11:

Tighten (clockwise) the locking nut (402RL1000) of the lip seal (402A5239).

Tool: Two-pin wrench



STEP 12:

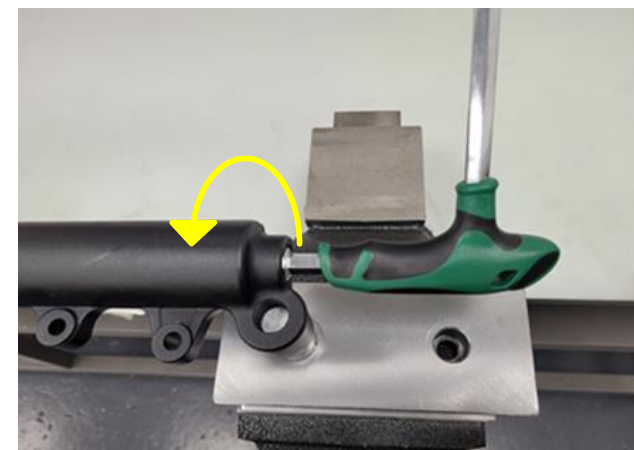
Fill the bottle with 30 ml SAE 20 w oil for suspensions.



STEP 13:

Tighten lower screw (anti-clockwise)

Tools: Allen 10 Tightening torque 20Nm.



IMPORTANT

Use only original spare parts, they must be assembled using assembly grease.

Exemption from liability:

M4 Racing Parts shall not be liable for any damage or injury to you or any third party resulting from riding, transport or other use of the shock absorber. In the event of fork failure or malfunction, M4 Racing Parts shall be exempt from any liability or obligation, other than repair or replacement of the fork, under the conditions set forth in the warranty provisions contained in this manual.

Express exclusions from the warranty:

-Parts replaced due to normal wear and tear or routine maintenance.

-Parts subject to normal wear and tear or routine maintenance.

-Suspension fluids.

General warranty exclusions:

-Installation of non-original M4 Racing Parts parts and/or accessories.

-Abnormal deformation, neglect, misuse or abuse.

-Accident or collision damage.

-Modification of original parts.

- Lack of proper maintenance.

-Loss or damage in transit.

-Damage to the exterior or interior caused by rocks, collisions or improper installation.

-Oil changes or maintenance work not carried out by M4 Racing Parts or Authorised Service.

Warranty policy:

The factory warranty period of the fork is one year (two years in EU countries) from the date of original purchase of the fork. To be eligible for warranty, each shock absorber must be accompanied by a copy of the original proof of purchase. The validity of the warranty will be at the sole discretion of M4 Racing Parts and will cover only defects in materials or workmanship. The duration of the warranty and the laws governing it may vary from country to country.

Fork seals are covered by a 90 day warranty from the date of purchase. After this period, they will be considered items subject to wear and tear from normal use and will no longer be covered by warranty.

Parts, components and assemblies subject to wear and tear and deterioration from normal use are not covered by this warranty.

M4 Racing Parts reserves the right to make all final warranty or non-warranty decisions.

Warranty claim process:

M4 Racing Parts offers a standard response time of 48 hours, although this may vary.

Please attach a note describing the problem and the sender's address with a telephone number and e-mail address where you can be reached.

Shipping costs will be borne by the sender, both on dispatch and on return to the origin.